

Timeline cards for lesson 3 of Florence Nightingale plan

1820



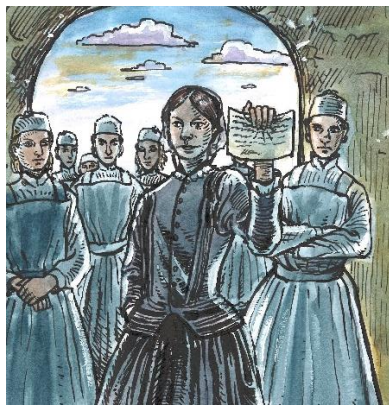
Florence Nightingale is born in the city of Florence in Italy

1910



Florence Nightingale dies

1854



Florence Nightingale takes nurses to Scutari Hospital in the Crimea

1860



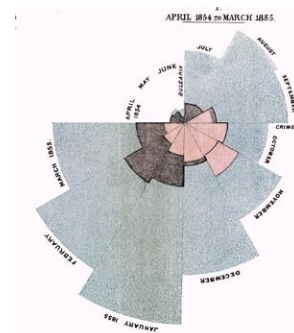
Florence Nightingale starts a nursing school in the UK

1846



Florence Nightingale trains as a nurse in Germany

1858



Florence Nightingale is the first woman elected as a member of the Royal Statistical Society

1819



The future Queen Victoria is born

1837



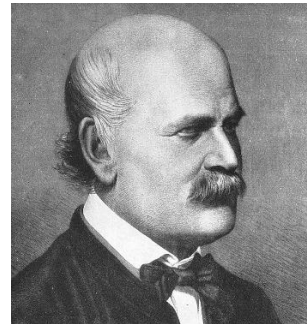
Victoria becomes queen

1901



Queen Victoria dies

1847



Ignaz Semmelweis publishes work on importance of handwashing to reduce disease

1853



Crimean War starts

1856



Crimean War ends